

Date - 22/02/2023

Dr. Pritam Kumar

Zoology Honors (B.Sc-I)

Deptt of Zoology,  
Shershah College, Sasaram,  
V.K.S. University, Ara.

1st PDF Paper - I(A)

LOCOMOTORY ORGANELLES AND LOCOMOTION

- OF PROTOZOA.

### (A) LOCOMOTOR ORGANELLES.

1. PSEUDPODIA: — These are temporary structures formed by the streaming flow of the cytoplasm. Sarcodines move with these structure, the basis of the form and structure, the pseudopodia are of the following four types: —

(a) LOBOPODIA: — These are lobe-like pseudopodia with broad and rounded ends. as in amoeba. These are composed of both the ectoplasm as well as endoplasm. The lobopodia move by pressure flow mechanism.

(b) FILOPODIA: — These are more or less filamentous pseudopodia, usually tapering from base to the pointed tip, as in Euglena, unlike lobopodia, the filopodia are composed of ectoderm only. Sometimes they may be simple or complex network.

(c) RETICULOPODIA: — The reticulopodia (Rhizopodia or myxopodia) are also filamentous. The filaments branch and fuse, form a network. This type occurs in ~~form~~ foraminiferans (eg - Globigerina). Reticulopodia display two way flow of ectoplasm.

(d) AXOPODIA: — These are more or less straight and radiating pseudopodia,



Consisting of a cytoplasmic sheath enveloping an axial filament, the former being almost fluid in consistency, like reticulopodia, the anopodia also display two-way flow of cytoplasm.

Anopodia are characteristic of heliozoans, such as *Actinosphaerium* and *Actinophrys*.

Fig 1 - Types of pseudopodia - (A) Lobopodia of *Amoeba proteus*. (B) Filopodia of *Euglypha*. (C) Reticulopodia of *Globigerina*. (D) Anopodia of *Actinophrys sal.*

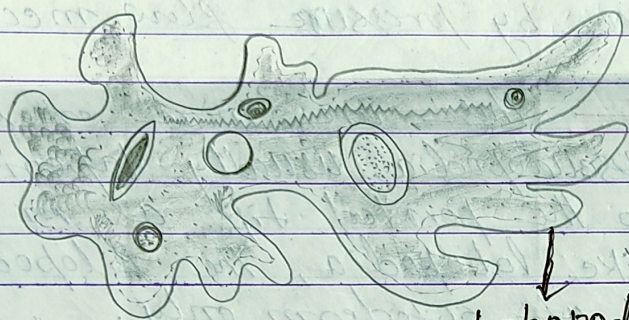
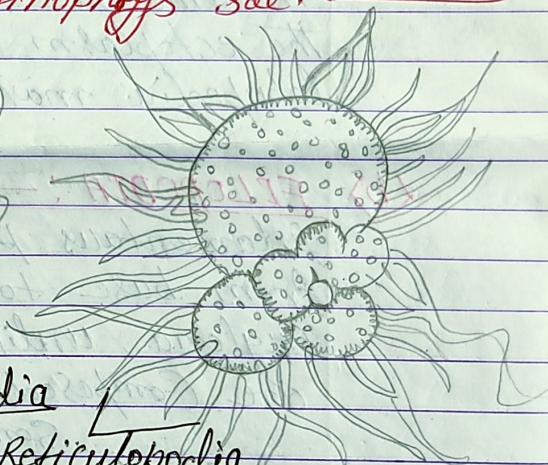


Fig - A



Lobopodia  
Reticulopodia

Fig - C

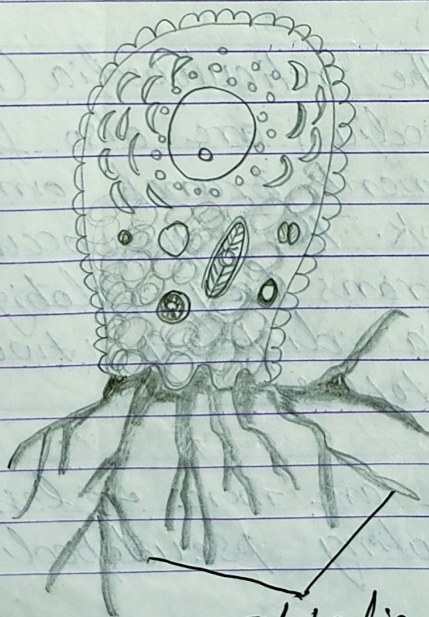


Fig - B. Filopodia

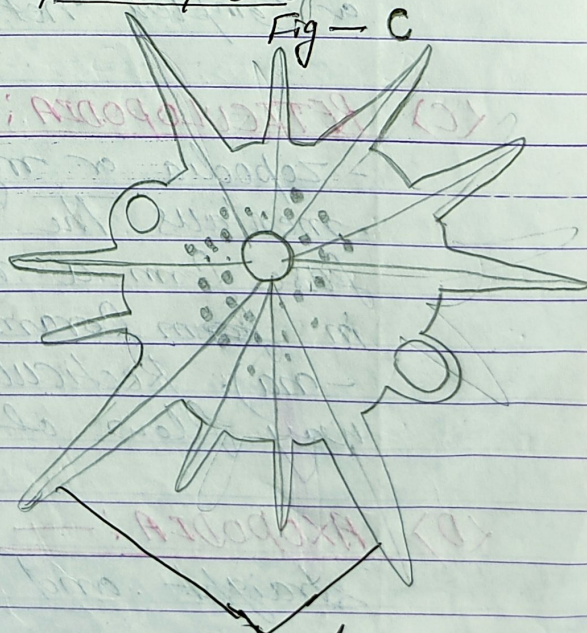


Fig - D. Anopodia